



SAILING INSTRUCTIONS

SNIPE CLASS INTERNATIONAL RACING ASSOCIATION

2021 Women's Snipe World Championship

Roy Yamaguchi Trophy

October 06 – 09, 2021

1. RULES:

The regatta will be governed by:

- 1.1 The rules as defined in the Racing Rules of Sailing (RRS).
- 1.2 The SCIRA Rules of Conduct for Conducting National and International Championship Regattas (RoC) available at https://www.snipe.org/images/2021/SCIRA_2021_Rules_of_Conduct_final.pdf
- 1.3 The Deed of Gift, available at <http://www.snipe.org/class/deeds-of-gift>.
- 1.4 The following National Prescription will apply: RRS 67 - CBVela prescribes that the organizing authority will appoint those responsible for the repair of damage.
- 1.5 The decision of the Jury will be final in accordance with RRS 70.5.
- 1.6 RRS Appendix T will apply.
- 1.7 If there is a conflict between languages, the English text will take precedence.

1.8 NOTATIONS

- [NP] This notation in a rule in the SI means that a breach of this rule shall not be grounds for a protest by a boat.
- [SP] This notation in a rule in the SI means that for a breach of this rule a standard penalty will be applied by the Race Committee without a hearing.
- [DP] This notation in a rule in the SI means that for a breach of this rule a discretionary penalty may be applied by the International Jury.

2. NOTICES TO COMPETITORS:

- 2.1 Notices to competitors will be posted on the official notice board located close to the Regatta Office.

3. CHANGES TO SAILING INSTRUCTIONS

- 3.1 Any change to the sailing instructions will be posted before 9:00 on the day it will take effect, except that any change to the schedule of races will be posted by 18:00 on the day before it will take effect.

4. SIGNALS MADE ASHORE

- 4.1 Signals made ashore will be displayed on the mast in front of the Regatta Office, close to shore.
- 4.2 4.2 When the "AP" race signal is displayed ashore, '1 minute' is replaced with not less than '45 minutes' in the race signal "AP."
- 4.3 4.3 When the "AP over H" race signal is displayed ashore the boats shall not leave the harbor. The warning signal will be made no less than 45 minutes after the signal is lowered with one sound. This changes Race Signals. [NP] [DP]

5. SCHEDULE

5.1. Registration

Date	Hours	Local
Sunday, October 03	09:00 to 12:00 and 14:00 to 18:00	Regatta Office
Monday, October 04	09:00 to 12:30 and 14:00 to 18:00	Regatta Office
Tuesday, October 05	09:00 to 12:00 and 14:00 to 18:00	Regatta Office
Wednesday, October 06	09:00 to 12:00	Regatta Office

5.2. Measurement

Date	Hours	Local
Sunday, October 03	09:00 to 12:30 and 14:00 to 18:00	Measuring Tend
Monday, October 04	09:00 to 12:30 and 14:00 to 18:00	Measuring Tend
Tuesday, October 05	09:00 to 12:00 and 14:00 to 18:00	Measuring Tend
Wednesday, October 06	09:00 to 12:00 by appointment	Measuring Tend

5.3. Races and Meetings

Date	Time	Event	Local
Tuesday, October 05	14:00	Pratice Race	Course Area
	19:00	Opening Ceremony	Flag's Patio
Wednesday, October 06	11:30	Competitors Meeting	Nautical Lounge
	13:00	Races	Course Area
Thursday, October 07	13:00	Races	Course Area
	19:00	Dinner	Main Clubhouse
Friday, October 08	13:00	Races	Course Area
	18:00	Musical Sunset by the lake	Snak Bar
Saturday, October 09	12:00	Races	Course Area
	18:00	Awards and Prize Givving	Main Clubhouse

5.4. No warning signal will be displayed after 16:00 on Saturday, October 09th

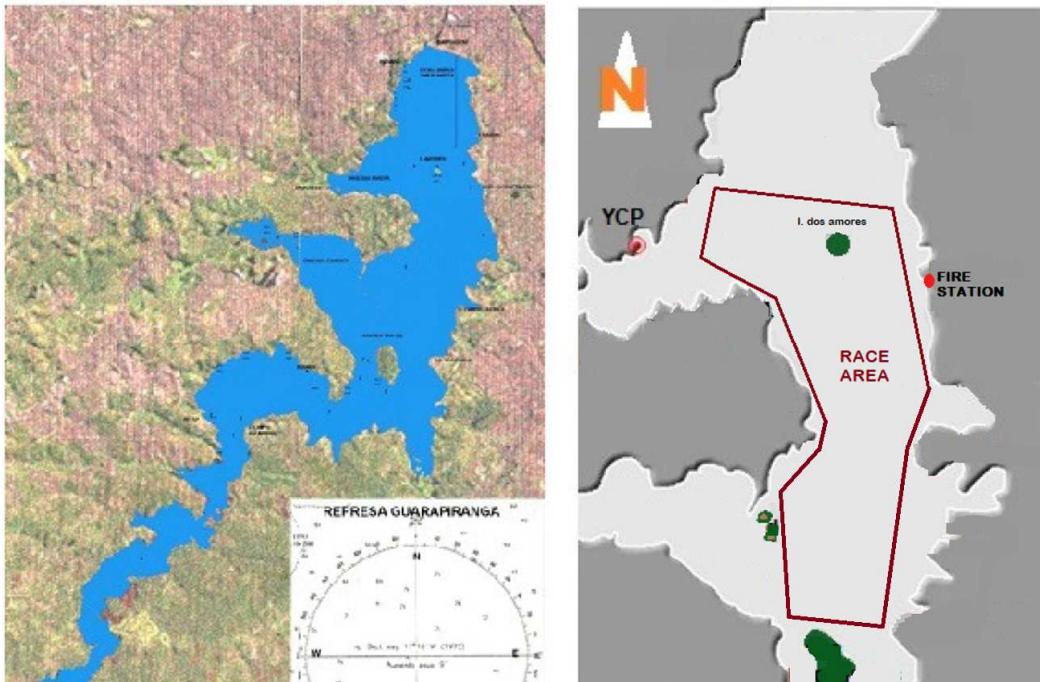
5.5. Two races are scheduled per day. A third race can be sailed only if the schedule is delayed.

6. CLASS FLAGS

6.1 The official Class Flag shall be the Snipe Class flag.

7. RACING AREA

7.1. [NP] The racing area will be located like the diagram bellow. Small deviations from this diagram will not be grounds for redress, since it's not in scale and can be used only as reference.



8. COURSES

- 8.1 The diagrams in Appendix A show the courses, including the approximate angles between legs and the order in which marks are to be passed. All course marks except gates shall be left to port.
- 8.2 The course signal (“W”, “T”, “O”, “W2”, “T2” or “O2”) shall be posted on the course board with one sound at least one minute before the warning signal. It will remain displayed for not less than five minutes after the start.
- 8.3 No later than the warning signal, the race committee signal boat will display the approximate compass bearing of the first leg.
- 8.4 The number of legs in a race may be reduced (RRS code flag S) but at least 2 (two) windward legs of the race shall be completed. This changes RRS 32.2.

9. MARKS

- 9.1 Marks 1, 1bis, 2, 3, 3s and 3p will be yellow inflatable buoys.
- 9.2 Changing marks will be red inflatable buoys.
- 9.3 Starting marks will be boats with orange flags displayed.
- 9.4 The finishing marks will be the RC boat with a blue flag displayed and:
 - 9.5 mark 1 for “W”, “O”, and “T” courses;
 - 9.6 another RC boat with a blue flag, for “W2”, “O2”, and “T2” courses.
- 9.7 A race committee vessel signaling a change of course is a mark as provided in SI 11.2.
- 9.8 If one of the marks "gate 3s-3p", is not placed, or is not replaced as per RRS 34, the remaining mark shall be left to port. This changes RRS 34.

10. THE START

- 10.1 The starting line will be between a staff displaying an orange flag on the race committee signal boat at the starboard end and a staff displaying an orange flag on the port-end pin boat.
- 10.2 A boat starting later than 5 minutes after her starting signal will be scored Did Not Start without a hearing. This changes RRS A4, A5.1 and A5.2.
- 10.3 [NP]The race committee, after the finish of a race and before the warning signal of a subsequent race, will attempt to post on the race committee vessel a list of OCS, or ZPF, or UFD boats.

11. CHANGE OF THE NEXT LEG OF THE COURSE

- 11.1 To change the next leg of the course, the race committee will lay a new mark, or move the gate, or move the finishing line and remove the original mark as soon as practicable. When in a subsequent change a new mark is replaced, it will be replaced by an original mark.
- 11.2 Except at a gate, boats shall pass between the race committee boat signaling the change of the next leg and the nearby mark, leaving the mark to port and the race committee vessel starboard. This changes RRS 28.

12. THE FINISH

- 12.1 The finish line will be between staffs displaying blue flag on the race committee vessels or between a staff displaying a blue flag and the port-end mark of the finish

line. 13. PENALTY SYSTEM

- 13.1 Appendix P and T will apply.
- 13.2 The penalty for breaking rules in the SI marked with [SP] and NoR 3.3 (bow numbers) shall be the 5% scoring penalty for the nearest race completed by the infringing boat, but not worse than the number of points corresponding to DSQ. If there are multiple infractions in the same race they accumulate to that race. This changes RRS 63.1 and A5.

14. TIME LIMITS AND TARGET TIMES

- 14.1 [NP] The target time for the first boat to finish is 50-60 minutes.
- 14.2 The time limit for the first boat to complete the first lap is 40 minutes. If the first boat fails to complete the first lap within this time the race committee shall abandon the race. For the purpose of this rule a lap means the rounding of Mark 3 (or passing the Gate 3s/3p) for the first time.

14.3 The time limit for the first boat to finish the race shall be 1 hour, 30 minutes. Any boat finishing more than 30 minutes after the first boat finishes or failing to finish within 2 hours from the start, whichever is shorter, shall be scored Did Not Finish (DNF) without a hearing. This changes RRS 35, A4 and A5.

15. PROTESTS AND REQUESTS FOR REDRESS

15.1 Appendix T will apply.

15.2 Protest forms are available at the Regatta Office. Protests and requests for redress or reopening shall be delivered there within the appropriate time limit.

15.3 The protest time limit is 90 minutes after the last boat has finished the last race of the day or the race committee signals no more racing for that day, whichever is later.

15.4 Notices will be posted no later than 30 minutes after the protest time limit to inform competitors of hearings in which they are parties or named as witnesses. Hearings will be held in the protest room, beginning at the time posted.

15.5 Notices of protests by the race committee, technical committee or protest committee will be posted to inform boats under RRS 61.1(b).

15.6 A list of boats that have been penalized for breaking RRS 42 will be posted on the Official Notice Board.

15.7 A list of boats that have been penalized as OCS, ZPF or UFD will be posted on the Official Notice Board.

15.8 A list of boats that have been penalized with Standard Penalties will be posted on the Official Notice Board.

15.9 An International Jury is constituted and shall have authority per RRS Appendix N. Their decision shall be final as provided in RRS 70.5. Per Appendix N2.2, SCIRA reserves for itself the right and responsibility to decide issues of eligibility, measurement and equipment. SCIRA may refer any issue to the International Jury for advice.

15.10 For the purpose of RRS 64.4(b) the “authority responsible” is the Measurer of the event or SCIRA Representative.

15.11 [NP][DP]All parties, witnesses and observers are expected and requires to use a face mask during hearings and arbitration meetings.

16. SCORING

16.1 Three (3) races are required to be completed to constitute a regatta.

16.2 When fewer than five (5) races have been completed, a boat’s series score will be the total of her race scores. No races will be excluded.

16.3 When from six (6) or more races have been completed, a boat’s series score will be the total of her race scores excluding her worst score.

16.4 A boat intending to retire and be scored RET shall report its intent in writing to the race committee or the Jury within the protest time limit.

17. SAFETY REGULATIONS [NP][SP]

17.1 Before the warning signal of her first race of the day each boat is required to sail past the stern of the main race committee signal boat on starboard tack and verbally check in. When the race committee verbally acknowledges a boat’s bow number, the check-in has been officially noted.

17.2 A boat that retires from a race or has the intention not to sail that day, shall notify the race committee as soon as possible

18. REPLACEMENT OF CREW OR EQUIPMENT

18.1 The same crew shall race in all races, except for reasons satisfactory to the race committee. Requests for a change of crew shall be submitted in writing to the RC. Once a crew has been excused, he/she may not return for the balance of the series.

18.2 The same skipper shall sail all races and can be replaced after the first race only, and then only if he/she is obviously incapacitated. If a skipper is replaced, the first race shall be the race dropped, or scored DNC.

18.3 Substitution of damaged or lost equipment will not be allowed unless authorized by the Measurer. Requests for substitution shall be made to the race committee at the first reasonable opportunity. [NP]

19. EQUIPMENT AND MEASUREMENT CHECKS [NP]

19.1 A boat or equipment may be inspected at any time for compliance with the Class Rules and Sailing Instructions. On the water, a boat can be instructed by a member of the race committee, or the technical committee, or the equipment inspector or measurer, to proceed immediately to a designated area for inspection.

20. EVENT ADVERTISING [NP][SP]

20.1 Boats shall display event advertising supplied by the organizing authority.

21. RIGHTS TO USE NAME AND LIKENESS

21.1 By participating in this event, competitors automatically grant to the SCIRA, organizing authority and the event sponsors the right, in perpetuity, to make, use, and show, at their discretion, any photography, audio and video recording, and other reproductions of them made at the venue or on the water from the time of their arrival at the venue, until their final departure, without compensation.

22. OFFICIAL BOATS

a) Race Committee boats will be identified by white flag with “CR”.

b) Judges’ boats will be identified by white flag with “J”.

c) Support and Coach boats will be marked with Bow Numbers.

23. SUPPORT BOATS [NP] [DP]

23.1 At the preparatory signal, coaches shall be positioned at least 50 meters below the starting line. After the starting signal coaches may follow the fleet, but shall stay 50 meters from any mark.

23.2 Coaches may not communicate with competitors after the warning signal for any race until after the competitors have finished of the race, abandoned or general recalled. This changes the preamble of Part 4.

23.3 All Coaches and Support boats shall register at the Regatta Office and shall be identified by a Bow number.

24. RADIO COMMUNICATIONS

24.1 A boat shall neither make or receive radio transmissions while racing nor receive radio communications not available to all boats, except in an emergency. This restriction also applies to mobile telephone and other devices with GPS capabilities.

25. TRASH DISPOSAL [NP] [DP]

25.1 Before her preparatory signal, trash may be placed aboard support and Committee Vessels.

26. PRIZES

26.1 Prizes shall be awarded as provided by NOR.

APPENDIX A

