



29er



2019 420 AND 29ER SOUTH AMERICAN CHAMPIONSHIP

15 - 21 April, 2019

Rio de Janeiro, Brazil

Organizing authority:
IATE CLUBE DO RIO DE JANEIRO

SAILING INSTRUCTIONS

1 RULES

- 1.1 The regatta will be governed by the rules as defined in *The Racing Rules of Sailing*.
- 1.2 No national authority prescriptions will apply.
- 1.3 RRS 40 and the preamble to Part 4 will be changed as follows:
 - (a) The first sentence of RRS 40 is deleted and replaced by: "Each competitor shall wear a personal flotation device (PFD) that complies with class rule C3.1, properly secured at all times while on the water except when temporarily adding or removing clothing."
 - (b) Add to the preamble of Part 4, after 'racing': ", except RRS 40 as amended by instruction 1.3(a)".
- 1.4 In all rules governing this championship:
 - 1.4.1 [NP] denotes a rule that shall not be grounds for protests by a boat. This changes RRS 60.1(a).
 - 1.4.2 [SP] denotes a rule which a standard penalty may be applied by the Race Committee without a hearing, or a discretionary penalty applied by the International Jury with a hearing. This changes RRS 63.1 and A5.
- 1.5 Racing rule changes will appear in full in the sailing instructions. The sailing instructions may also change other racing rules.
- 1.6 If there is a conflict between the notice of race and the sailing instructions, the latter will take precedence. This changes RRS 63.7.
- 1.7 If there is a conflict between languages, the language of the original version of the relevant document will take precedence.
- 1.8 Decision of the International Jury will be final as provided in RRS 70.5.
- 1.9 For all the rules in these sailing instructions:
 - (a) [DP] indicates that the penalty for an infraction of this rule is at the discretion of the protest committee;
 - (b) [NP] indicates that a boat can not protest an infraction of this rule. This modifies rule 60.1 (a) of the RRV.

2 [DP] [SP] [NP] IDENTIFICATION; CAMERAS AND ELECTRONIC EQUIPMENT

- 2.1 Each day, the first, second and third boats in the series ranking at the beginning of the day shall display yellow, blue and red bibs worn outside the personal floatation device and other clothing on the crew respectively, and be visible while racing. The bibs will be provided by the Organizing Authority. Bibs shall be returned to the Organizing Authority before the protest time limit defined in SI 16.2.
- 2.2 Boats in specified fleets shall display bow numbers. The Organizing Authority will supply the numbers and instructions for their use.
- 2.3 Boats shall display required event sponsor advertising. The Organizing Authority will supply the advertising and instructions for their use.
- 2.4 For a split event, boats shall display a colored ribbon corresponding to the fleet to which she has been assigned. The ribbon shall be fixed to the top of her mast. The Organizing Authority will supply the ribbons.
- 2.5 Boats may be required to carry cameras, sound equipment or positioning equipment as specified by the Organizing Authority.

3 [DP] CODE OF CONDUCT

- 3.1 Competitors shall comply with any reasonable requests from a regatta official.
- 3.2 Competitors shall handle any boats or equipment provided by the Organizing Authority with proper care and seamanship, and in compliance with any written instructions.

4 COMMUNICATIONS WITH COMPETITORS

- 4.1 Notices to competitors will be posted on the official notice board, in front of ICRJ "coffee place" at the balcony near the stairs to the Race Office
- 4.2 Signals made ashore will be displayed on the signal mast located on the main pier of embarkation and disembarkation.
- 4.3 When flag AP is displayed ashore, '1 minute' is replaced with 'not less than 45 minutes' in race signal AP.



29er



5 CHANGES TO THE SAILING INSTRUCTIONS

- 5.1 Any change to the sailing instructions will be posted before 10h on the day it will take effect, except that any change to the schedule of the first races of a day will be posted by 20h on the day before it will take effect.

6 SCHEDULE

- 6.1 Schedule of races:

April 15th	09h to 17h 09h to 19h	Registration Equipment inspection
April 16th	09h to 12h 11h 13h	Registration and equipment inspection Opening ceremony Cerimony and coach/Sailors meeting at late Clube do Rio de Janeiro Races
April 17th	13h	Races
April 18th	13h	Races
April 19th	13h	Races
April 20th	12h 18h	Races Closing ceremony at late Clube do Rio de Janeiro

- 6.2 420 - 12 races are scheduled with a maximum of four races per day,
29er – 16 races are scheduled with a maximum of five races per day
- 6.3 The scheduled time of the first warning signal is:
(a) on April 16th, 17th, 18th, 19th: 13h.
(b) on April 20th: 12h.
- 6.4 Races not sailed on the scheduled day may be sailed on a following day at the discretion of the Race Committee.
- 6.5 The warning signal for each succeeding race will be made as soon as practical.
- 6.6 No warning signal will be given after 16h on the last day.

7 CLASS FLAG

- 7.1 The class flag will be a white flag with the class logo.

8 RACING AREA

- 8.1 SI Attachment A shows the location of the racing area.

9 THE COURSES

- 9.1 The diagrams in SI Attachment B show the courses, including the course designations, the approximate angles between legs, the order in which marks are to be passed, and the side on which each mark is to be left.
- 9.2 No later than the warning signal, the Race Committee signal boat will display the course designation and the approximate compass bearing of the first leg.

10 MARKS

- 10.1 Marks 1, 2 Gates 3 (3s/3p) and 4 (4s/4p) will be Conical Yellow
- 10.2 The starting and finishing marks will be the boat of the race committee and a red buoy.
- 10.3 New marks as provided in SI 12.1 will be Orange cylindrical.

11 THE START

- 11.1 The starting line will be between the boat of the race committee and a red buoy.
- 11.2 **[DP] [NP]** Boats whose warning signal has not been made shall avoid the starting area. The starting area is defined as 100 meters from the starting line and its extensions in all directions.
- 11.3 A boat starting later than 4 minutes after her starting signal will be scored DNS without a hearing. This changes RRS A4 and A5.

12 CHANGE OF THE NEXT LEG OF THE COURSE

- 12.1 To change the next leg of the course, the Race Committee will
- lay a new mark,
 - move the finish line, or
 - move the leeward gate.
- When the new mark is laid, the original mark will be removed as soon as practical. When in a subsequent change a new mark is replaced, it will be replaced by an original mark.

13 THE FINISH

- 13.1 The finishing line will be between the boat of the race committee and a red buoy..



29er



14 PENALTY SYSTEM

- 14.1 Appendix P will apply as changed by 14.2.
- 14.2 RRS P2.3 will not apply and RRS P2.2 is changed so that it will apply to any penalty after the first one.
- 14.3 29er - Rule 44.1 of the RRS is amended so that the Two-Turn Penalty is replaced by the One-Turn Penalty.

15 TIME LIMITS AND TARGET TIMES

- 15.1 Time limits and target times for the first boat are as follows (in minutes):

Class	Time Limit	Mark 1 Time Limit	Finish Window	Race Target Time
420	70	25	15	45
29er	60	20	10	30

- 15.2 If no boat has passed Mark 1 within the Mark 1 time limit, the race shall be abandoned.
- 15.3 Boats failing to finish within the time stated in the Finish Window after the first boat sails the course and finishes will be scored Did Not Finish (DNF) without a hearing. This changes RRS 35, RRS A4 and RRS A5.
- 15.4 Failure to meet the target time will not be grounds for redress. This changes RRS 62.1(a).

16 PROTESTS AND REQUESTS FOR REDRESS

- 16.1 Protest forms are available from the protest information desk located at the race office. Protests and request of redress or reopening shall be delivered there within the appropriate time limit.
- 16.2 The protest time limit is 60 minutes after the arrival of the race committee in the race headquarters..
- 16.3 Notices will be posted within 15 minutes of the protest time limit to inform competitors of hearings in which they are parties or named as witnesses. Hearings will be held in the protest room beginning at the time posted. Hearings may be scheduled to begin up to 30 minutes before the end of the protest time.
- 16.4 Notices of protests by the Race Committee or International Jury will be posted to inform boats under RRS 61.1(b).
- 16.5 A list of boats that have been penalized under Appendix P for breaking RRS 42 will be posted.
- 16.6 For the purpose of RRS 64.3(b) the 'authority responsible' is the 420 and 29er Technical Delegate'.
- 16.7 Breaches of rules in the Notice of Race and Sailing Instructions marked [NP] will not be grounds for a protest by a boat. This changes RRS 60.1(a). Penalties for these breaches and breaches of the Class Rules are at the discretion of the International Jury.
- 16.8 Penalties for breaches of the Event Measurement Regulations & Policies, class rules, RRS 55 or rules in the Notice of Race and Sailing Instructions marked [DP] or [SP] should the case go to a hearing, are at the discretion of the International Jury. A boat may accept a discretionary penalty for the breaches stated above before a hearing concerning the same incident by completing a form available at the jury office.
- 16.9 For breaches of the SIs marked [SP], the Race Committee may apply a standard penalty without a hearing. A list of these breaches and the associated standard penalties will be posted on the official notice board. However, the Race Committee may protest a boat when they consider the standard penalty to be inappropriate. A boat that has been penalized with a standard penalty can neither be protested for the same incident by another boat nor can another boat request redress for this Race Committee action. This changes RRS 60.1, 62.1, 63.1, and A5.
- 16.10 On the last racing day qualifying series or the final series a request for re-opening a hearing shall be delivered
 - (a) within the protest time limit if the requesting party was informed of the decision on the previous day;
 - (b) no later than 30 minutes after the requesting party was informed of the decision on that day.This changes RRS 66.
- 16.11 On the last racing day qualifying series or the final series, or on the last day of racing, a request for redress based on the jury decision shall be delivered no later than 30 minutes after the decision was posted. This changes RRS 62.2.

17 SCORING

- 17.1 To request correction of an alleged error in posted race or series results, a boat may complete a scoring enquiry form available at the race office.
- 17.2 4 races are required to be completed to constitute a regatta for 420 and 6 races are required to be completed to constitute a regatta for 29er.
- 17.3 Discards
 - (a) When fewer than 5 races have been completed, a boat's series score is the total of her race scores for 29er and 420.
 - (b) When 6 to 11 races have been completed, a boat's series score will be the total of her race scores excluding her worst score for 29er and 420.
 - (c) When 12 races have been completed, a boat's series score will be the total of her race scores excluding her two worst scores for 29er and 420.

18 [DP] [NP] SAFETY REGULATIONS

- 18.1 [SP] Boats not leaving the harbor for the day's races shall notify the race office as soon as possible.
- 18.2 [SP] A boat that retires from racing shall notify the Race Committee before leaving the racing area, or if that is not possible, shall notify the race office as soon as possible after returning ashore.



29er



19 [DP] [NP] REPLACEMENT OF CREW OR EQUIPMENT

- 19.1 Substitution of competitors will not be allowed without prior written approval of the Race Committee and shall comply with any restrictions in the Notice of Race.
- 19.2 Substitution of damaged or lost equipment shall be made in accordance with the Event Measurement Regulations and Policies, Part A section 4.

20 [DP] [NP] EQUIPMENT AND MEASUREMENT INSPECTION

- 20.1 A boat or equipment may be inspected at any time for compliance with the Class rules and SIs.
- 20.2 On the water, a boat shall act in accordance with any instruction by the Technical Committee to a designated area for inspection.

21 OFFICIAL BOATS

- 21.1 Official boats will be marked as follows:

Official Boat	Flag
Race Committee	Orange Flag with "RC"
International Jury	Yellow Flag with "JURY"
Media / Press	White Flag with "PRESS"
Safety Boat	White Flag with "+"

22 [DP] SUPPORT BOATS

- 22.1 See Appendix C Support Boat Regulation.

23 [DP] [NP] TRASH DISPOSAL

- 23.1 In addition to RRS 55, trash may be placed aboard support and official boats.

24 [DP] [NP] BERTHING

- 24.1 When berthed, boats shall be kept in their assigned place in the boat park.

25 [DP] [NP] RADIO COMMUNICATION

- 25.1 A boat shall neither make radio transmissions while racing nor receive radio communications not available to all boats, except in an emergency or when using equipment provided by the Race Committee. This restriction also applies to mobile telephones.

26 PRIZES

- 26.1 Prizes will be awarded as stated in Notice of Race.

27 RISK STATEMENT

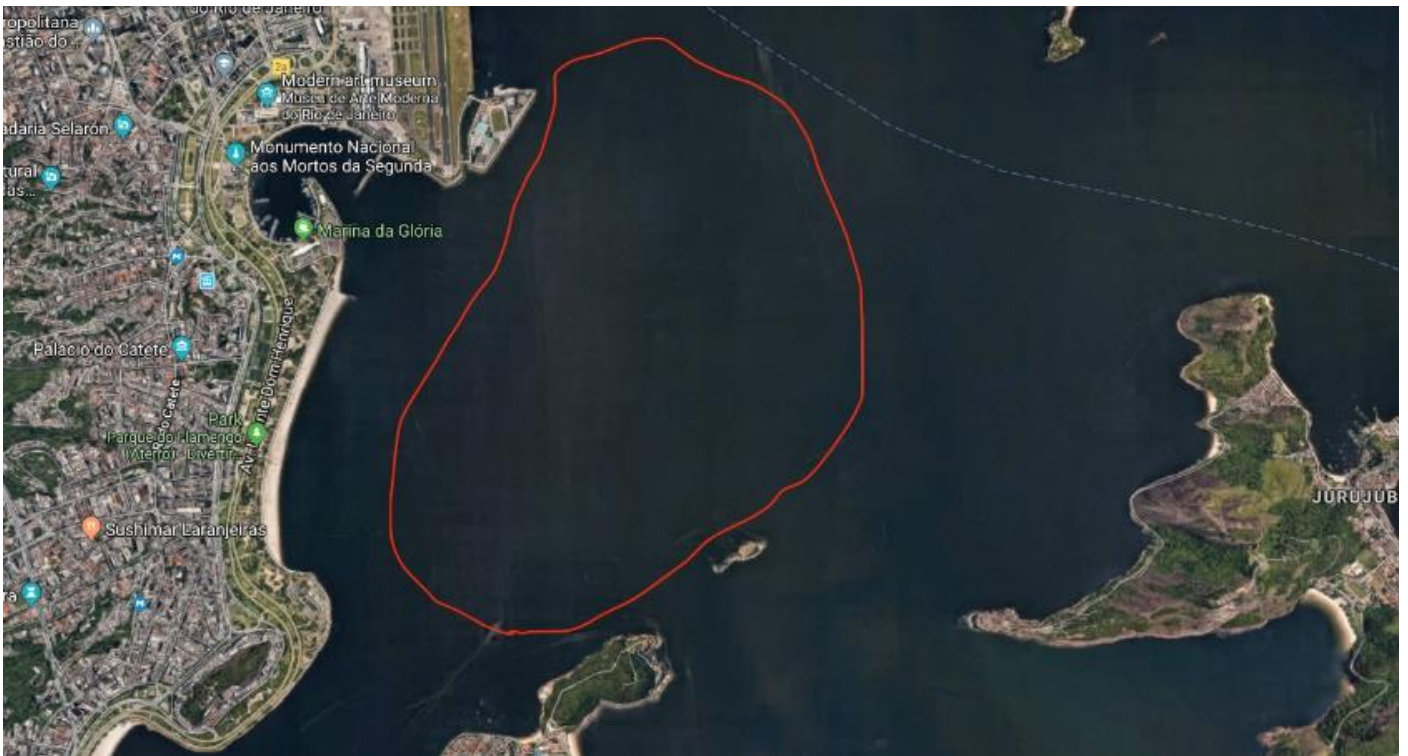
- 22.1 Competitors and support team participate in the Championships entirely at their own risk and they are reminded of the provisions of RRS 4, Decision to Race. Sailing is by its nature an unpredictable sport and therefore involves an element of risk. By taking part in the event, all competitors agree and acknowledge that:
- 22.2 They are aware of the inherent element of risk involved in the sport and accept responsibility for the exposure of themselves, their crew and their boat to such inherent risk whilst taking part in the event;
- 22.3 They are responsible for the safety of themselves, their crew, their boat and their other property whether afloat or ashore;
- 22.4 They accept responsibility for any injury, damage or loss to the extent caused by their own actions or omissions;
- 22.5 By participating in any race, they are satisfied that their boat is in good order, equipped to sail in the event and they are fit to participate;
- 22.6 The provision of a race management team, patrol boats, umpires and other officials and volunteers by the organizer does not relieve them of their own responsibilities;
- 22.7 The provision of patrol boat cover is limited to such assistance, particularly in extreme weather conditions, as can be practically provided in the circumstances.

28 RIGHTS TO USE NAME AND LIKENESS

- 28.1 By participating in the regatta competitors automatically grant to the International 420 Class Association, the Organizing Authority and their sponsors, the right in perpetuity to make, use and show, from time to time at their discretion, any motion pictures and live, taped or filmed television and other reproductions of the athlete during the period of the competition without compensation.

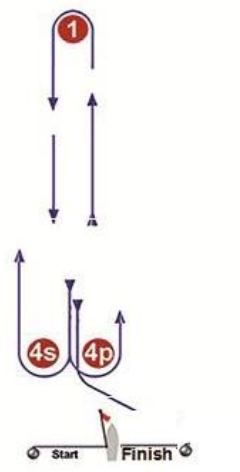
ATTACHMENT A – RACING AREA

The racing area is presented below.



ATTACHMENT B – THE COURSES

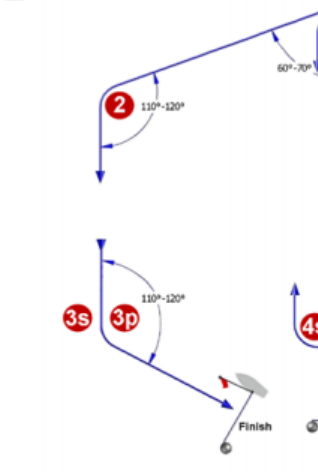
LR



Course: Windward / Leeward

Signal	Mark Rounding Order
LR2	Start - 1 - 4s/4p - 1 - 4p - Finish
LR3	Start - 1 - 4s/4p - 1 - 4s/4p - 1 - 4p - Finish
LR4	Start - 1 - 4s/4p - 1 - 4s/4p - 1 - 4s/4p - 1 - 4p - Finish

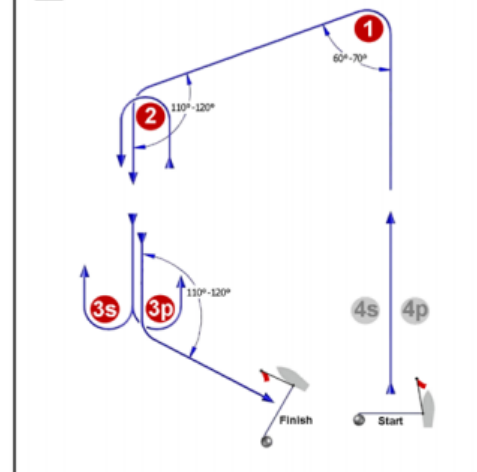
I



Course: Inner Trapezoid

Signal	Mark Rounding Order
I2	Start - 1 - 4s/4p - 1 - 2 - 3p - Finish
I3	Start - 1 - 4s/4p - 1 - 4s/4p - 1 - 2 - 3p - Finish
I4	Start - 1 - 4s/4p - 1 - 4s/4p - 1 - 4s/4p - 1 - 2 - 3p - Finish

O



Course: Outer Trapezoid

Signal	Mark Rounding Order
O2	Start - 1 - 2 - 3s/3p - 2 - 3p - Finish
O3	Start - 1 - 2 - 3s/3p - 2 - 3s/3p - 2 - 3p - Finish
O4	Start - 1 - 2 - 3s/3p - 2 - 3s/3p - 2 - 3s/3p - 2 - 3p - Finish



29er



ATTACHMENT C – SUPPORT BOAT REGULATIONS

1. General

- 1.1 These Support Boat Regulations (SBR) shall apply from 00:00 on Monday the 15th of April 2019 until 23:00 on Saturday the 20th of April 2019.
- 1.2 For the purposes of these regulations, a support boat includes any boat that is under the control or direction of a person who is or may provide physical or advisory support to an athlete, including the gathering of data that may be used at a later time.
- 1.3 An alleged breach of any of these regulations may be referred to the International Jury for a hearing. As a result of the hearing, the International Jury may instruct the OA to withdraw accreditation and access rights from the driver or person in charge, with or without the option of substitution, either for a specified period or for the remainder of the competition. Note also, action may be taken under RRS 69.
- 1.4 The OA may change these regulations at any time. Any changes will be posted on the official notice board and circulated to team leaders.
- 1.5 The OA may, at its discretion, refuse to register support boats deemed to be unsuitable.
- 1.6 Support boats and designated drivers shall be registered at the regatta office either before leaving the venue by water for the first time or by 18:00 on the day before the first race of the event that it is supporting, whichever is earlier.
- 1.6.1 Only an accredited person may be a designated driver.
- 1.6.2 Each designated driver has a motorboat driving license recognized by a national authority appropriate to that boat; and
- 1.7 Support boats shall be marked with the applicable Club sail letters clearly displayed on both sides of the boat in strongly contrasting colors at all times while afloat. The minimum height for the letters shall be 200 mm. The letters will not be provided by the OA.

2. Sailing venue

- 2.1 Support boats shall use the designated slipway/area for launching. Once launched, trailers shall be moved immediately to the trailer park or as otherwise directed by the OA.
- 2.2 When not in use, support boats shall be appropriately berthed/moored at the sailing venue in the allocated areas for support boats for the entire time that these Support Boat Regulations apply.

3. Safety

- 3.1 Support boats shall carry on board:
 - a) life jackets / buoyancy aid for all passengers and the driver
 - b) first-aid kit;
 - c) VHF radio;
 - d) device for making a sound signal;
 - e) compass;
 - f) adequate anchor and tackle for conditions and depth;
 - g) tow rope (minimum 15m long and 10mm thick);
 - h) operational engine kill cord (also known as a safety lanyard or automatic engine immobilizer);
 - i) hand pump or bailer
 - j) knife; and
 - k) any additional safety equipment required by local maritime law.
- 3.2 It is recommended that life jackets be worn at all times when afloat.
- 3.3 When flag Y is displayed on the Signal Boat or ashore, Rule 40 applies also for coach boats.
- 3.4 **It is strongly recommended that the kill cord is used at all times when the engine is running.**
- 3.5 The maximum plated / certified passenger limits for the boat shall never be exceeded.
- 3.6 Team leaders are responsible for overseeing the safe operations of their support boats on the water, including knowledge of who is afloat and ensuring their safe return to the venue.
- 3.7 At all times, the registered driver(s) of a support boat shall comply with directions given by a race official. In particular, this includes assisting in rescue operations when requested to do so.
- 3.8 When the race committee displays flag V with repetitive sounds and/or broadcasts “Code Flag Victor” on the designated VHF Channel 74 all registered support boats shall comply with any instruction given by the race committee or the OA as assistance / rescue boats.
- 3.9 Support boats shall comply with local harbor and marina regulations, including speed limits.



29er



4. General restrictions

- 4.1 The registered driver(s) of a support boat will be responsible for the control of the boat at all times and will be held responsible for any inappropriate behavior, dangerous actions or improper practices, or actions affecting the fairness or safety of competition.
- 4.2 Support boats shall not leave any device, piece of equipment, buoy, marker or similar item permanently in the water. Temporary use of floating objects is allowed for current measurement. These objects shall be removed as soon as the measurement has been taken.
- 4.3 Support boats should take particular care to minimize their wash when transiting the course areas.

5. Racing area restrictions

- 5.1 Support boats shall stay outside areas where boats are racing from the time of the preparatory signal for the first fleet to start until all boats have finished or the race committee signals a postponement, general recall or abandonment.
- 5.2 During any starting sequence, support boats shall stay at least 100 meters to leeward of the starting line and its extensions.
- 5.3 Support Boats shall not be positioned:
 - 5.3.1 Closer than 100 meters of any boat racing.
 - 5.3.2 Within 100 meters of the starting line and marks.
 - 5.3.3 Between any boat racing and the next mark of the course.
 - 5.3.4 Between the inner and outer trapezoid courses.
 - 5.3.5 Within 50 meters of any mark of the course while boats are in the vicinity of that mark.
 - 5.3.6 Within 50 meters of the finishing line and marks while boats are finishing.
- 5.4 In addition, support boats that are motoring above 5 knots shall remain at least 150 meters from any boat racing.
- 5.5 When a race committee or jury member instructs a support boat to move further from the course area, the support boat shall do so immediately.